

Tuolumne, California
CST Goldmine and Vault Site

Tuolumne County, California
Township 1North/Range 16 East/Sections 4, 9
USGS Topo Map Quadrangles: "Tuolumne"
Aerial Photos c/o Google Earth (earth.google.com)
"South House" Coordinates (approx.)
40°57'45.59"N, 120°13'36.93"W



Road to Street Gate
(Access via 1st Street)
Property Boundary
Extends North to Gate

Property West Boundary

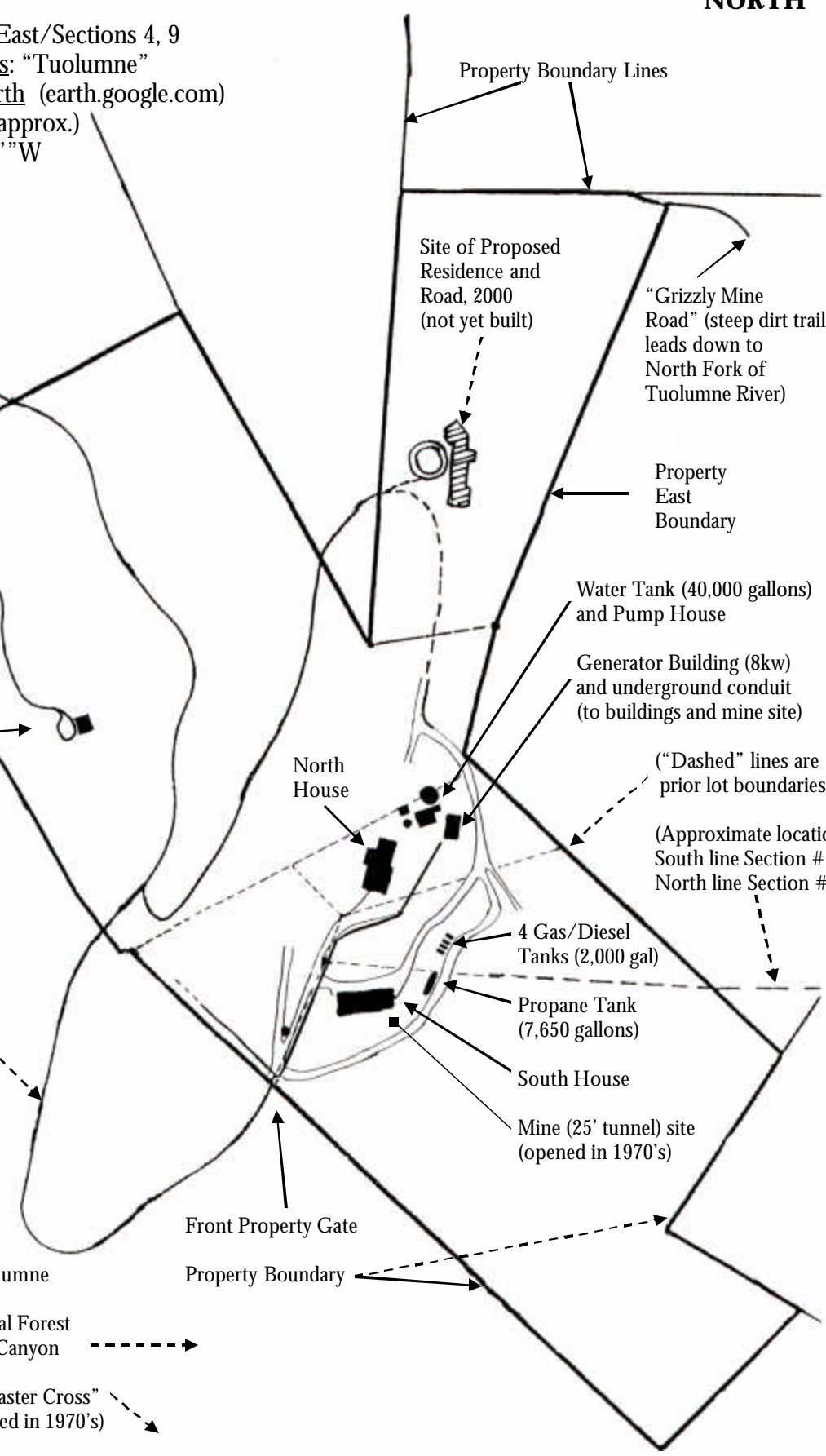
Mine (250' Tunnel) Site
Excavated 1997-1998
(Next to main shaft of mine
operated 1874-1916, 1936)

Road access on neighboring
property, via right-of-way

Townsite of Tuolumne

Stanislaus National Forest
Tuolumne River Canyon

Mount Havila "Easter Cross"
(est. 1944, relocated in 1970's)



(“Dashed” lines are
prior lot boundaries)

(Approximate location,
South line Section #4,
North line Section #9)